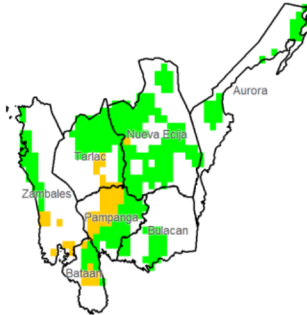


Region III (Central Luzon)

Water Availability for Rice
Prevailing Stage : None

Harvesting and/or pre-planting stage is possibly ongoing.

Water Availability for Corn
Prevailing Stage : (II) Vegetative



Provincial Values

	Mon. Ave. Rainfall (mm)	Rice		Corn	
		CS CCI (%)	CS CCI (%)	CS CCI (%)	CS CCI (%)
Aurora	253.6	I	91.7	I	163.9
		II	84.7	II	122.3
		III	81.4	III	99.5
		IV	121.7	IV	121.1
Bataan	130.9	I	29.9	I	73.0
		II	26.4	II	49.3
		III	24.8	III	35.8
		IV	47.1	IV	48.6
Bulacan	261.5	I	59.7	I	110.1
		II	55.1	II	78.0
		III	53.0	III	61.3
		IV	82.7	IV	77.2
Nueva Ecija	223.0	I	47.7	I	100.6
		II	43.1	II	69.1
		III	40.9	III	53.0
		IV	69.4	IV	68.2
Pampanga	177.0	I	36.3	I	77.5
		II	32.6	II	53.8
		III	30.9	III	40.6
		IV	54.2	IV	53.1
Tarlac	191.6	I	35.5	I	98.1
		II	31.0	II	61.6
		III	29.0	III	43.0
		IV	59.6	IV	60.6
Zambales	193.8	I	42.5	I	121.4
		II	38.0	II	78.4
		III	36.0	III	57.2
		IV	66.7	IV	77.2

Crop Stage (CS) highlighted in black is the dominant stage during the month of May

Rice CS:
(I) Nursery
(II) Vegetative
(III) Reproductive
(IV) Ripening

Corn CS:
(I) Establishment
(II) Vegetative
(III) Reproductive
(IV) Maturity

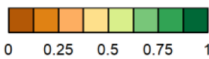
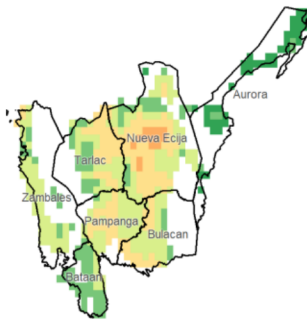
CCI Category:
Inadequate
Sufficient
Excess

Regional Summary

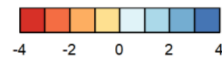
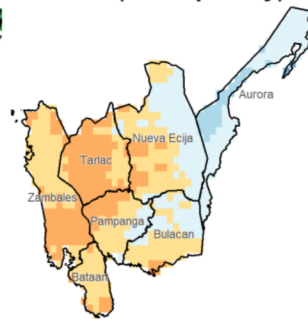
The water availability for the rice crops was inadequate in most parts of the region, with the exception of Aurora and Bulacan, where sufficient water supply was observed. On the other hand, water supply for the prevailing vegetative stage of corn crops was observed to be adequate, except in the province of Bataan.

Meanwhile, the SPEI3 map showed generally drier conditions except for the eastern portions of the region. This was also observed in RX1day and RX5day maps. As shown, the eastern portions of the region experienced maximum rainfall of about 100–250 mm. This amount of rainfall was attributed to the passage of Typhoon AGHON in the eastern coastal waters of the region. Despite this extreme weather phenomenon, no significant damage to agriculture has been reported in the region.

NDVI



SPEI3 (Mar-Apr-May)



RX1day



RX5day

